

# AIRLINKVMS

# User Manual

V2.4.1.7720

## 1, Instruction

### 1.1 Instruction

AIRLINKVMS provides preview/playback/video services for small and medium network of IP camera Manager. This manual may contain technically incompletes, and its contents will be regularly updated without notice; the updated contents will be added in the new version of the user manual. We will improve or update the products described in this manual at any time. The features support P2P device addition and management simplify for CMS system, convenient to operate, centralized manage user, error management, system maintenance and TOP navigation. Provide streaming media distribution function, streaming media storage and playback, monitor playback connection status, and provide relevant status notification Operation System environment OS : Microsoft Windows XP sp1 or above CPU : Intel Pentium IV 2.4 GHz

AI Human Tracking Camera AirLinkVMS Cameras

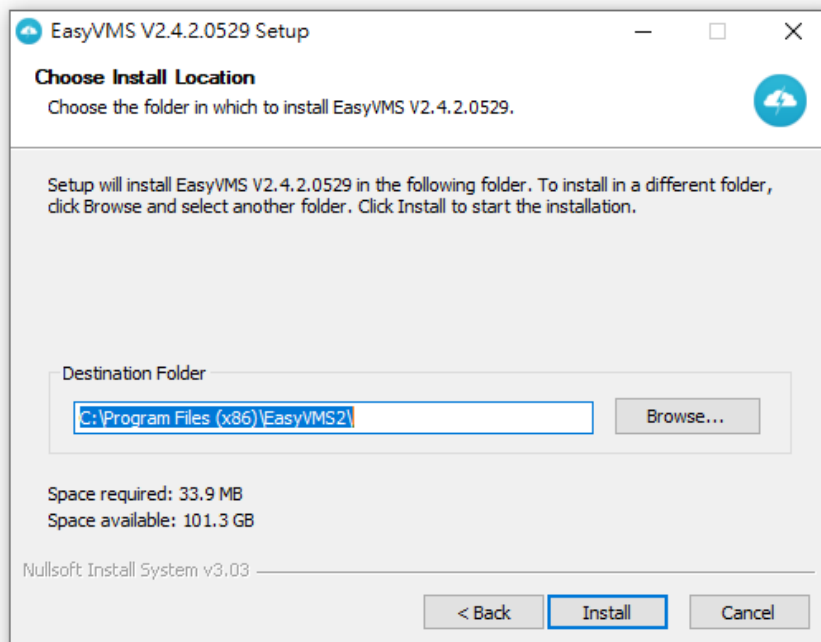
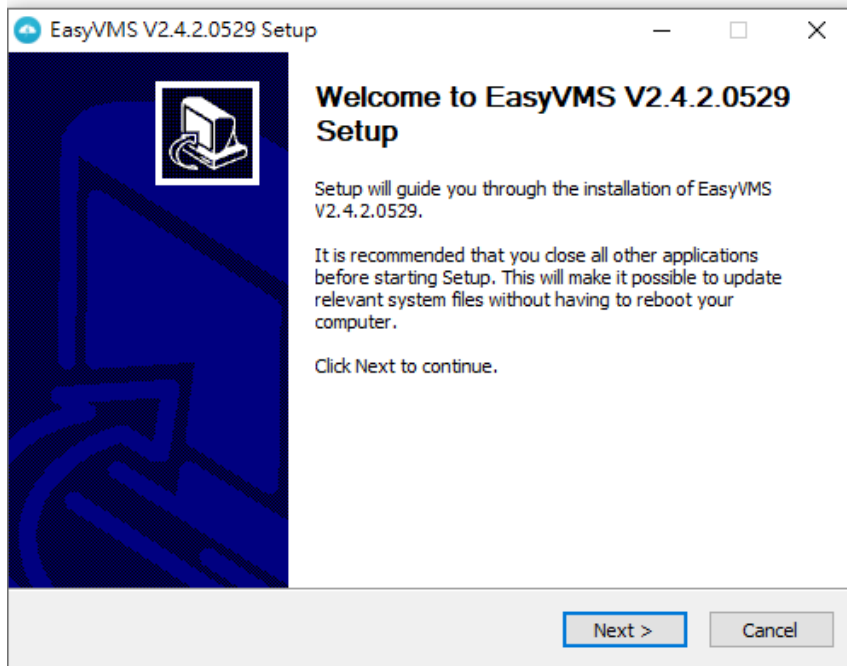
or above Memory : 1G memory or above

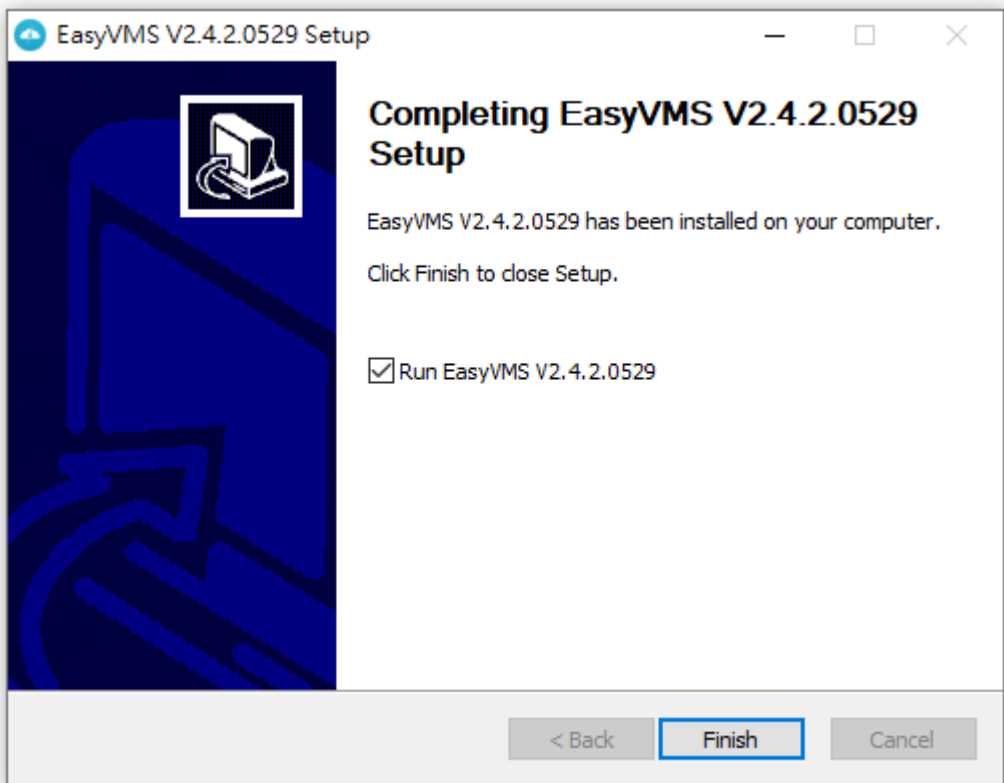
## 2, Installation and Operation Installation


### 2.1.EASYVMS installation



Search the file in the software directory  , Running the software, it will step for Installation.





After finished the installation, press the program of ICON  then you can run the program to login the system.



Username is admin, Password is empty

## 2.2. Interface for introduce

Running the CMS software, you can see the picture ◦



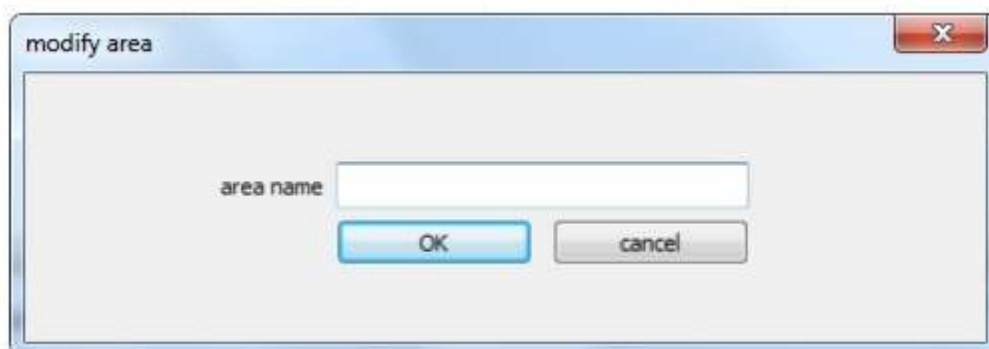
there have Live, Remote, Playback, Album, Device Manage, System Log, Alarm Information, Set main functions, press the button, it will change to Sub functions. for the left area is device navigation, for the right area is video screen, for the upper right corner, it is help, logout, minimize, maximize, close buttons.

2.3 Device Manage Click the device manage button to enter the device manage page, there have add, modify, delete operations for area and device.

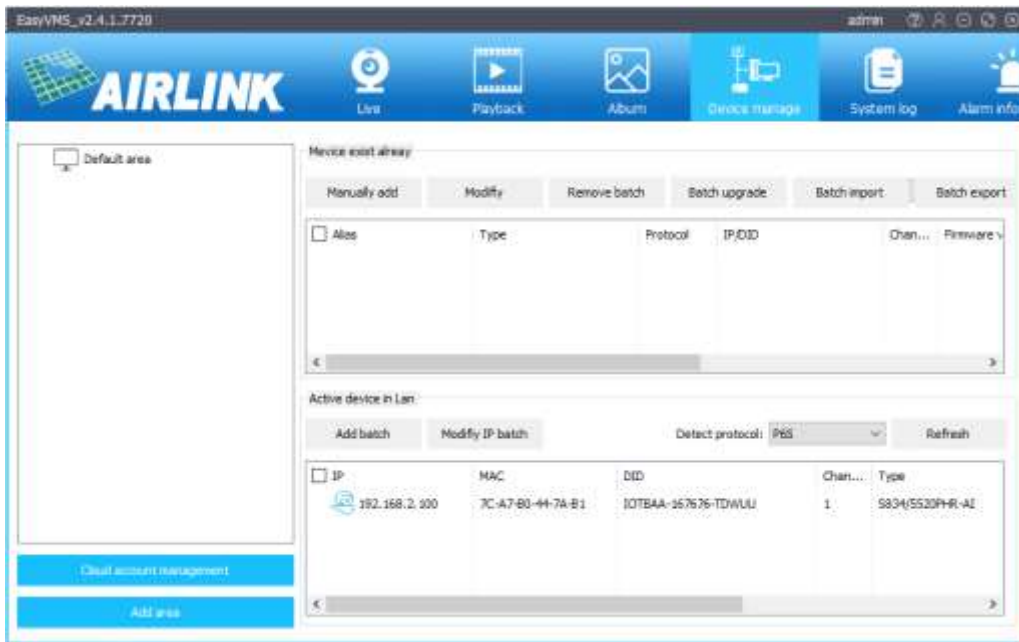
2.3.1 Area Configuration Manage device in area, Add area



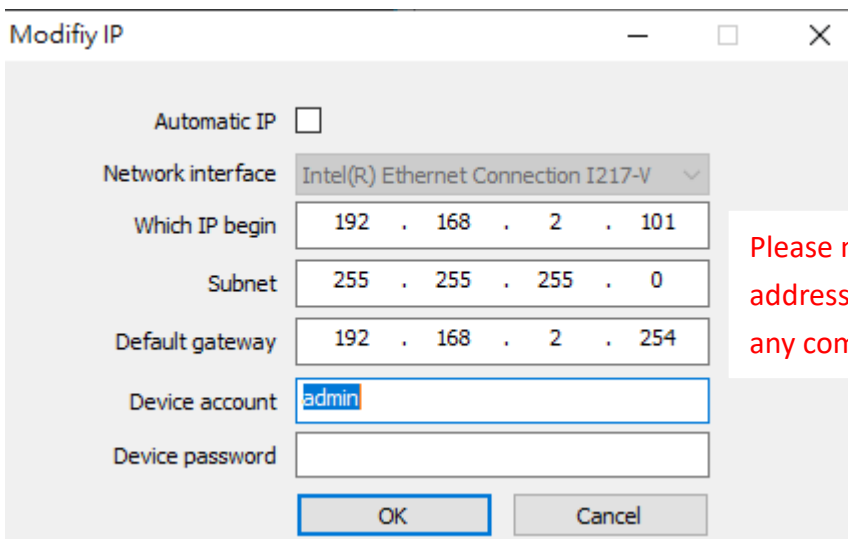
Also can press right key for custom new area.



2.3.2 Device Add, Modify, Delete Click the Refresh button for search device.

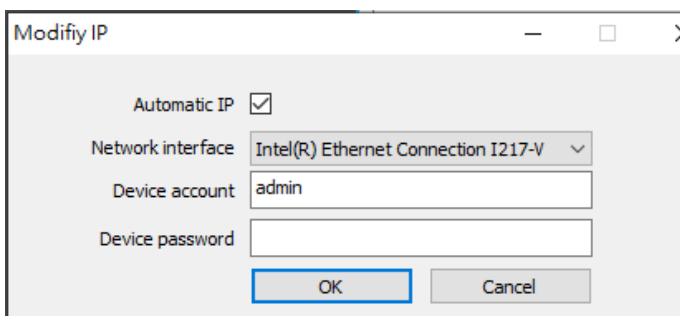


Click the camera IP address and show “modify IP” dialog box for change the new IP address of camera.



Please make sure that the newly set IP address does not conflict with the IP of any computer or devices.

If you want easy, you can choose “Reference PC IP”, it will default the IP address for your camera. You also can manually fill the IP address on it, but username: admin, password: empty (no password) After press “OK” button, save address and refresh IP.



Press Live function, you see the preview the interface



Double click the left camera IP address, you can see the video on the right screen. If you want add more device, you can choose Device"> Default area(right key) Choose "Auto Open"/"Open by Area" Open all channels

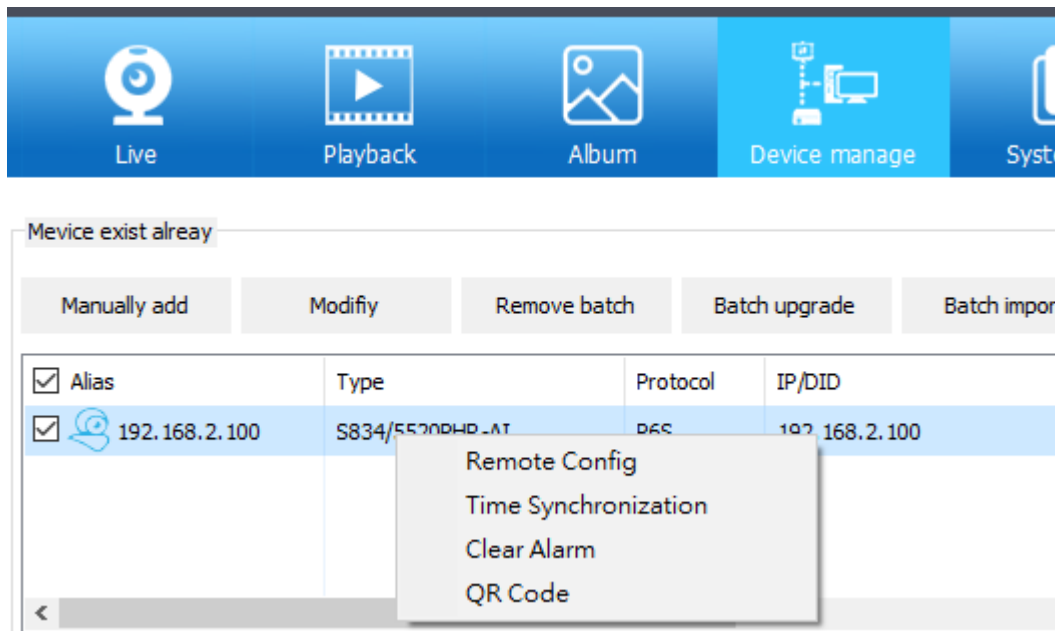


Delete Device :



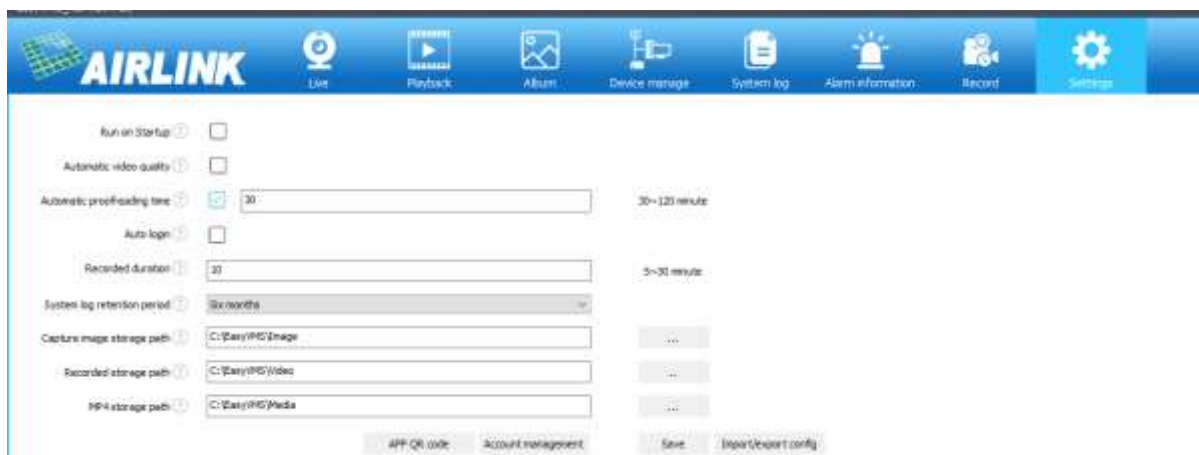
### 2.3.4 Device Control

Device control have function include: Time synchronization, device restart, clean alarm Etc  
 Time synchronization: Device manage> added device, Choose the device, Press Time synchronization button, then the device and the pc will same time.



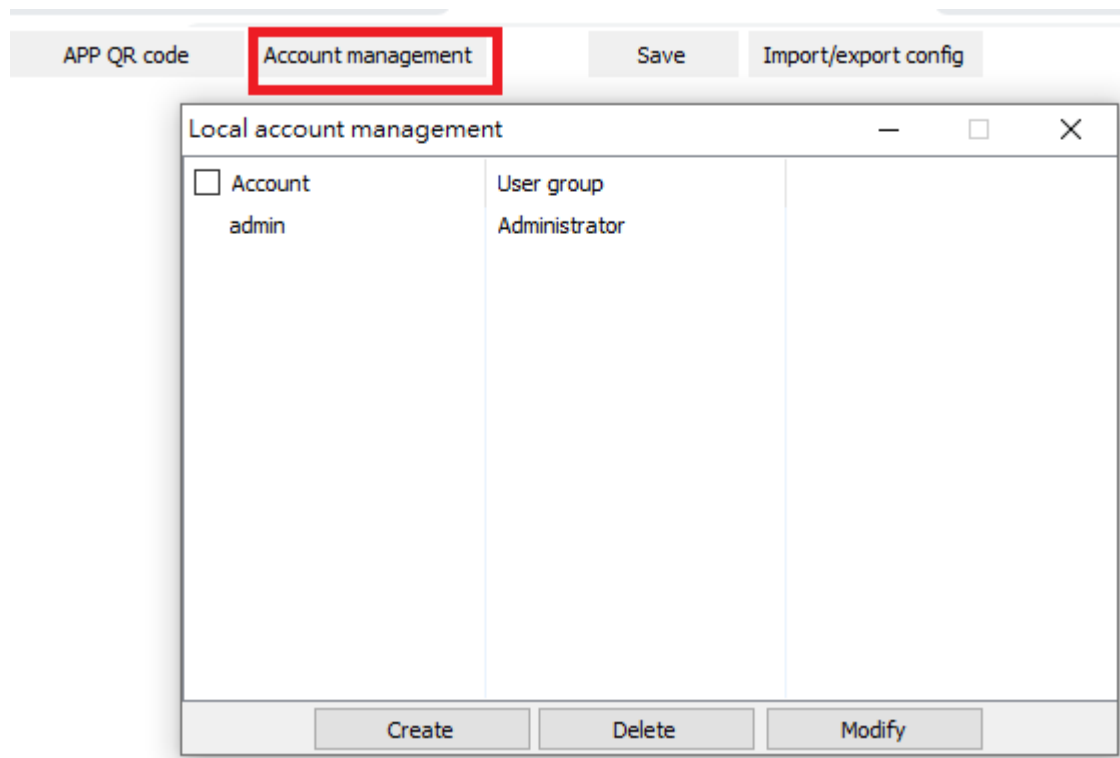
You also can choose “Remote config” and “Clear Alarm” at the same time

### 2.3.1, System Configuration Press “Settings” Login System Configuration

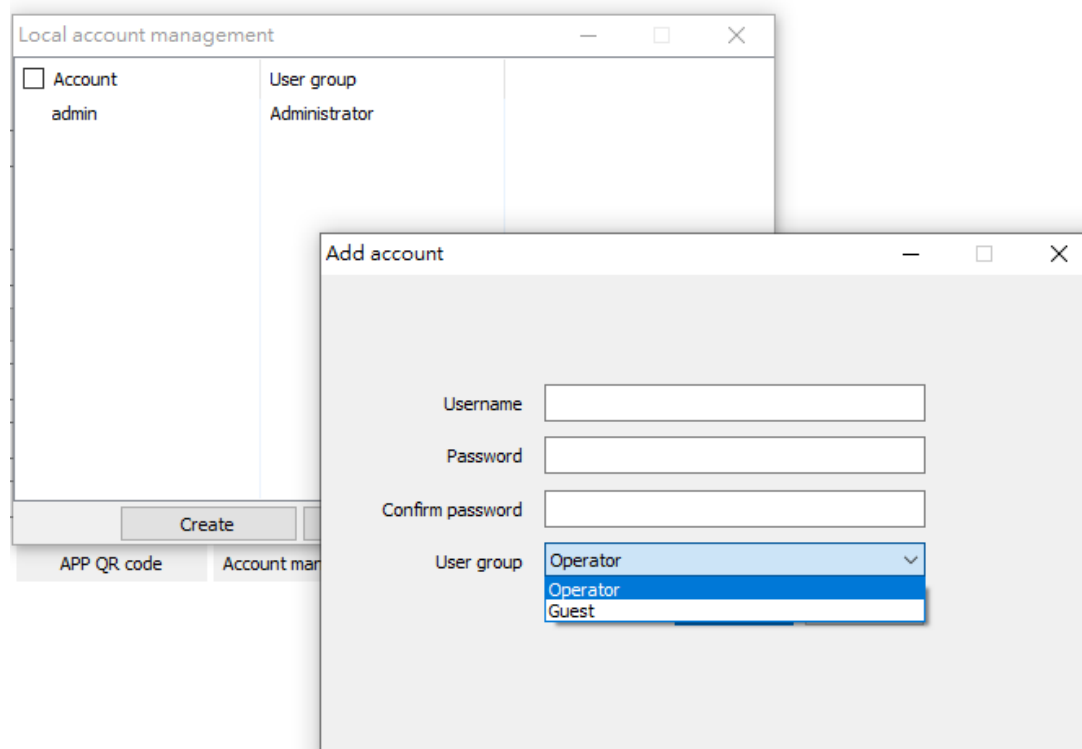


1, Support setting auto start running CMS AIRLINKVMS , Choose **【 auto startup 】** button and save. Then it will auto running in next restart computer. 2 , Support Setting auto Proofreading interval time, Choose **【 automatic sync time to device 】** button , input the time (like: 120), and save it, then it will proofreading interval time after 2hours 3, Support Setting duration of local recording, Choose the dialog box of the duration and input the number(like 30), then it will recording half hours one file. 4 , you can setting save time of the log file. 5 , Setting the Snapshot and recording save path, Press choose the path , like ( C:\ EASYVMS \Image/ C:\ EASYVMS \Video ) . After save, the snapshot path is C:\

EASYVMS \Image , Recording path is C:\ EASYVMS \Video. Account Management: Login to system setting, you can manage local account for operation, include Create Administrator, Create Guest, Change password, Delete device and more. Press **【account management】** button, Press **【Create】** , input new user name, password, and user group.



After save the operation, the group will see a user1 in the list



Press **【Account Management】** button , choose operation user name is user1, Press





【Delete】 , then the create user account will delete. The authority have three level for user:  
Administrator : Administrator authority can arrange device and user, live, playback, search log, change password, switching user, exit CMS. Operator : Live video, playback recording, search Log, switching user, change password. Guest user : Live video, switch user, change password.


## 2.5, Live Preview

2.5.1. Preview Control There have some function button on the preview,




Icon  is close all channels live viewing.


Icon  is screenshot, save capture picture to local storage.

Icon  is full channels recording.

Icon  is on audio.

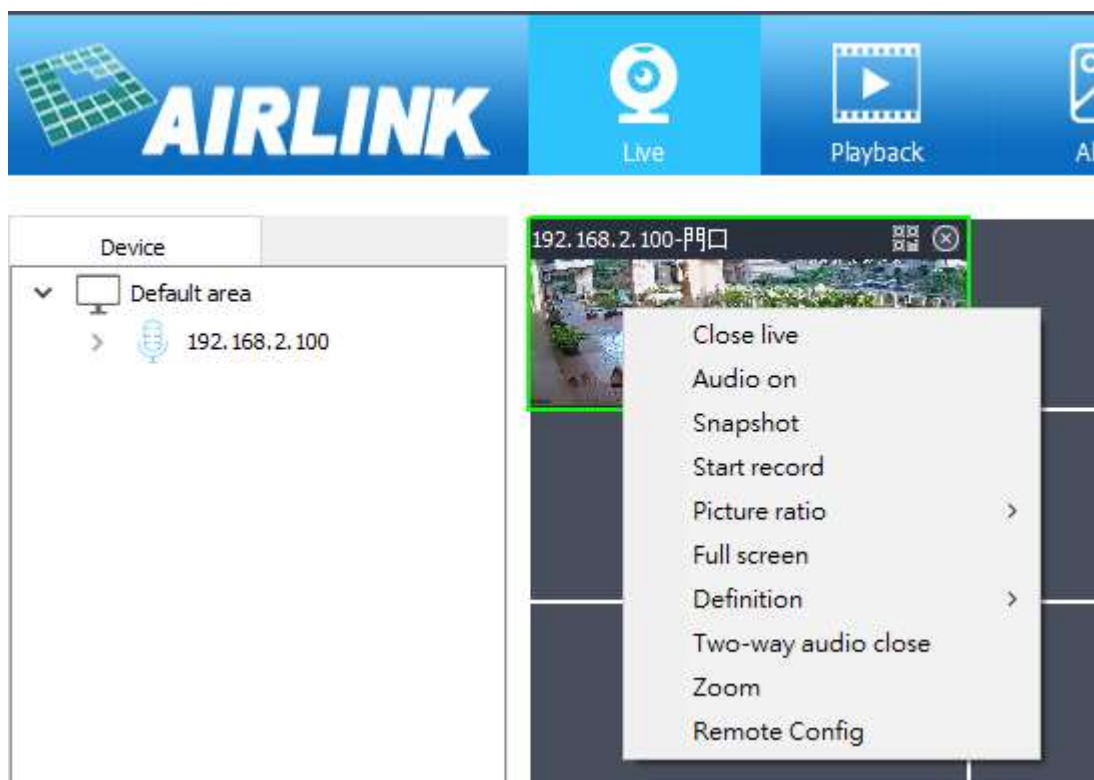
Icon  is mute.

Icon  is setting multiple video on screen, single, 4/9/16/25/36 channels.

Icon  is next screen.

Icon  is full videos screen press ESC exit it.

2.5.2. Channel right key control menu For the preview, choose a channel for right key, it show the menu.



Press **【close live】** Button , close the channel preview ◦

Press **【Mute】** Button , close the channel audio.

Press **【snapshot】** Button, snapshot picture of the channel save to local.

Press **【start record】** Button, recording video of the channel save to local.

Press **【picture ratio】** Button, setting preview video size.

Press **【full screen】** Button, make the preview video of the channel to full screen.

Press **【definition】** Button, setting the channel video quality (main stream/ sub stream, only use for p2p)

Press **【Two-way audio close】** Button , close all the audio voice.

Press **【zoom】** Button , digital zoom for this channel.

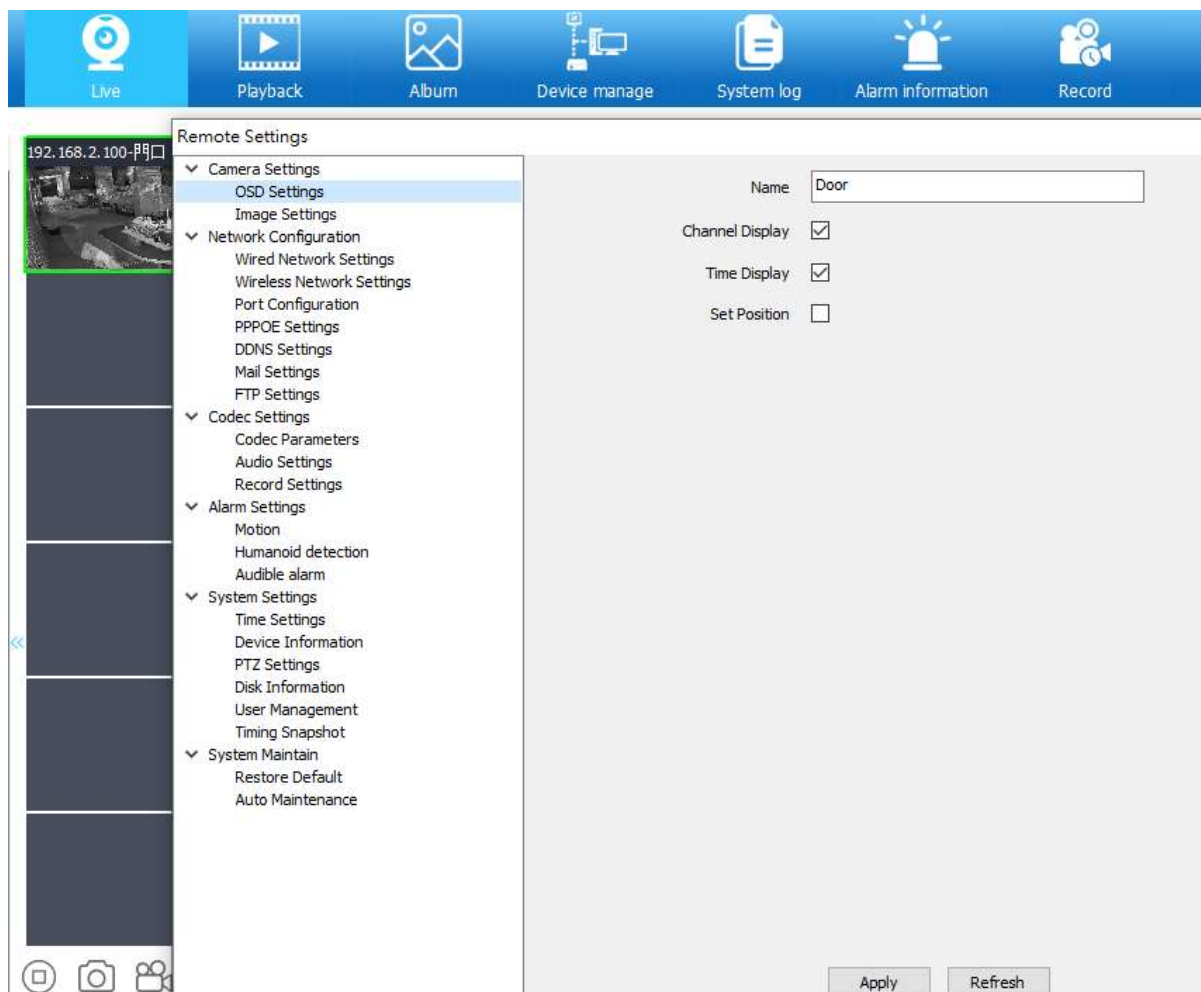
Press **【Remote config】** ,Configure remote camera parameters.

### 2.5.3, Remote Config

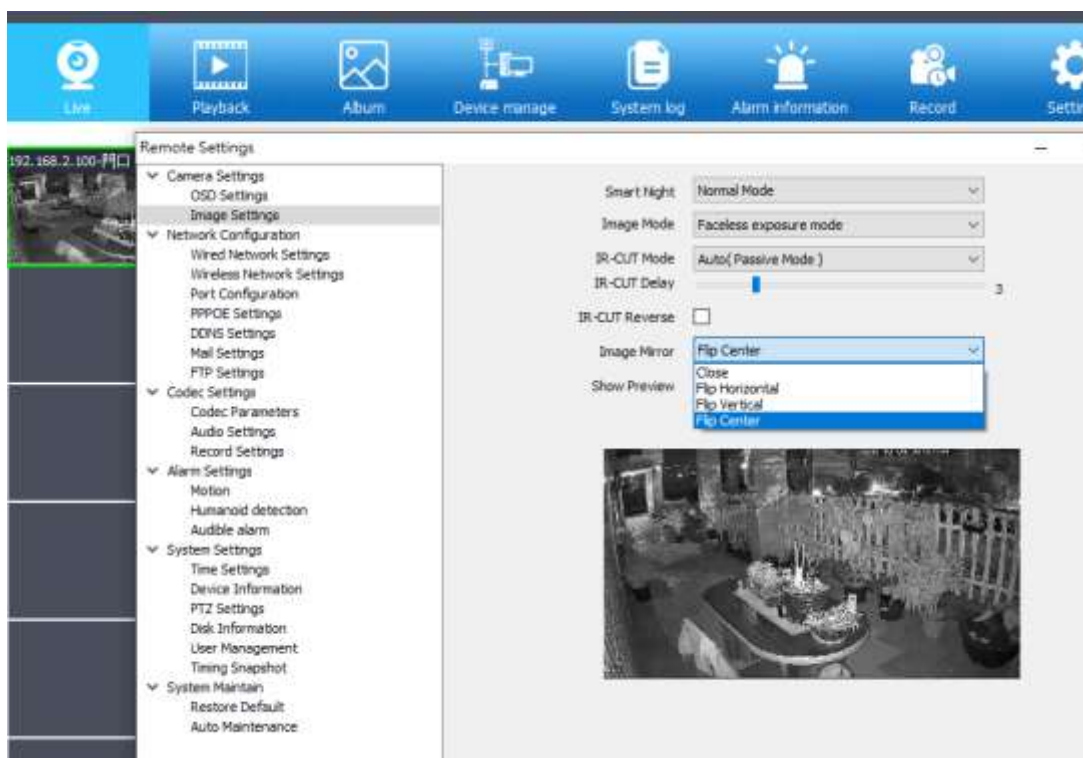
#### 2.5.3.1, Camera settings

A, Channel Name, edit the channel name and Channel Display, Time display, Set Position

AI Human Tracking Camera AirLinkVMS Cameras

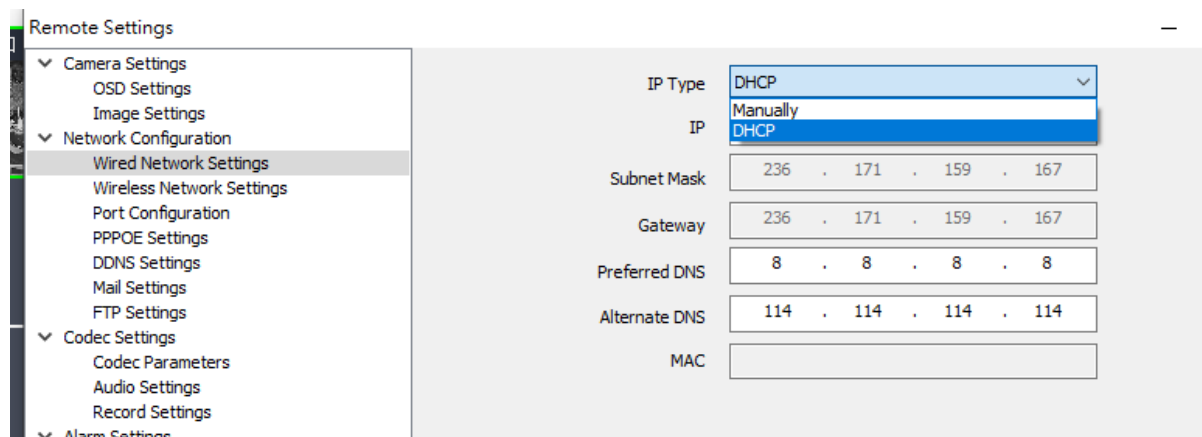


B, Setting parameter of camera video. Smart Night: Normal Mode. IR-CUT mode: auto (Passive mode), Day/Night, Auto (Active mode) IR-CUT Sensitivity: 0-50(The higher the number, the higher the sensitivity.) Image Mirror: close, Flip horizontal ,FlipVertical, Flip Center

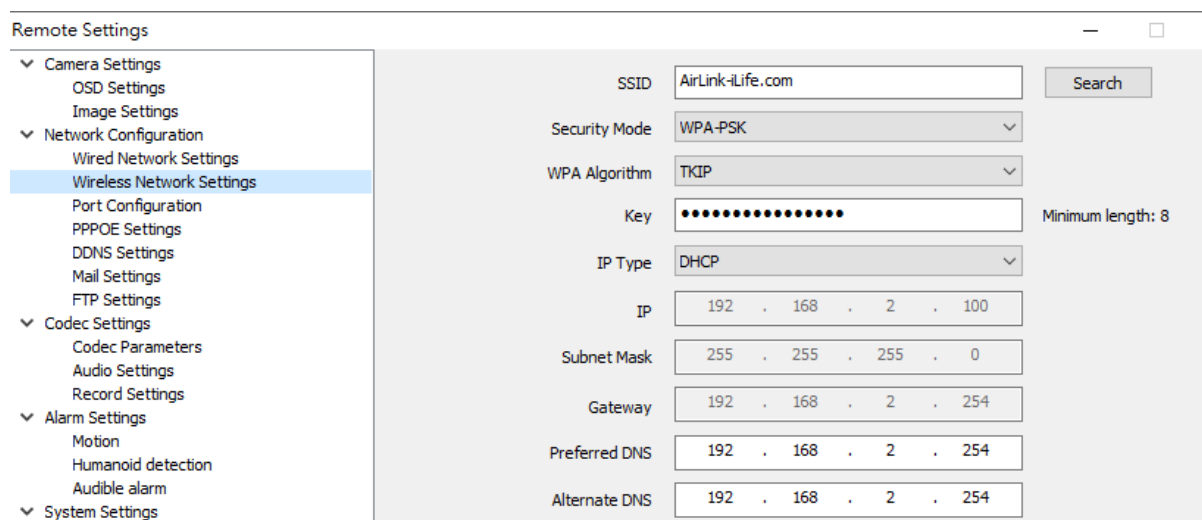


### 2.5.3.2, Network configuration

A, Wired Network Settings: You can choose the IP address type, manually and DHCP mode, and Modify the IP address parameters.



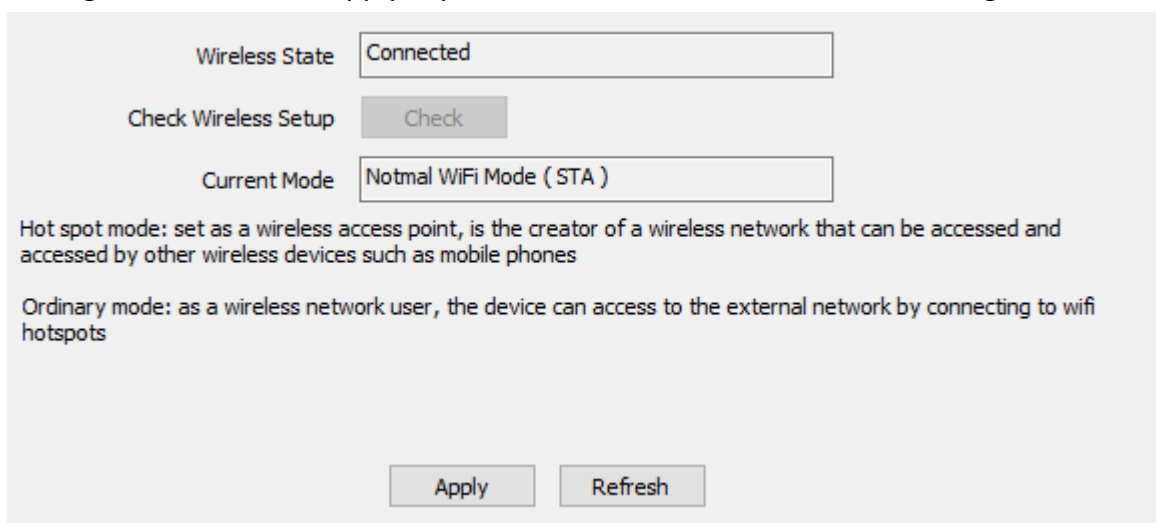
B, Wireless Network Settings: If you use the camera at first time, and your camera connect to your router through Ethernet cable, please Click “Search” for add your WIFI setting



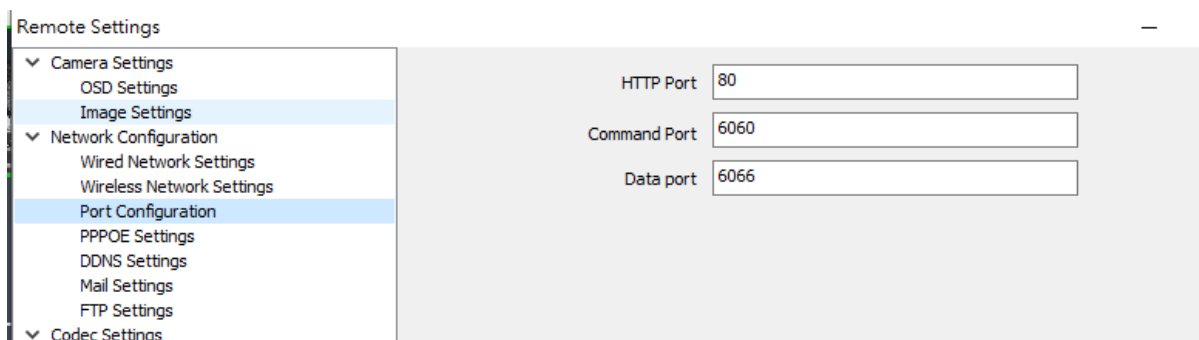
WiFi Scanner

Index	RSSI	SSID	Authentication	Encrypt
1	60	AirLink-iLife.com	TKIP	WPAPSK
2	71	home33-3-4f	AES	WPAPSK
3	68	Wireless 2.4G	TKIP	WPAPSK
4	72	AirLink ac 2.4G	TKIP	WPAPSK
5	58	NH0922020455	AES	WPAPSK
6	57	yypoly168	AES	WPAPSK
7	54	Repeater-Airlink	AES	WPAPSK
8	54	SSK-272013	AES	WPAPSK
9	54	D-Link_DIR-612	TKIP	WPAPSK
10	51	Grace	AES	WPAPSK

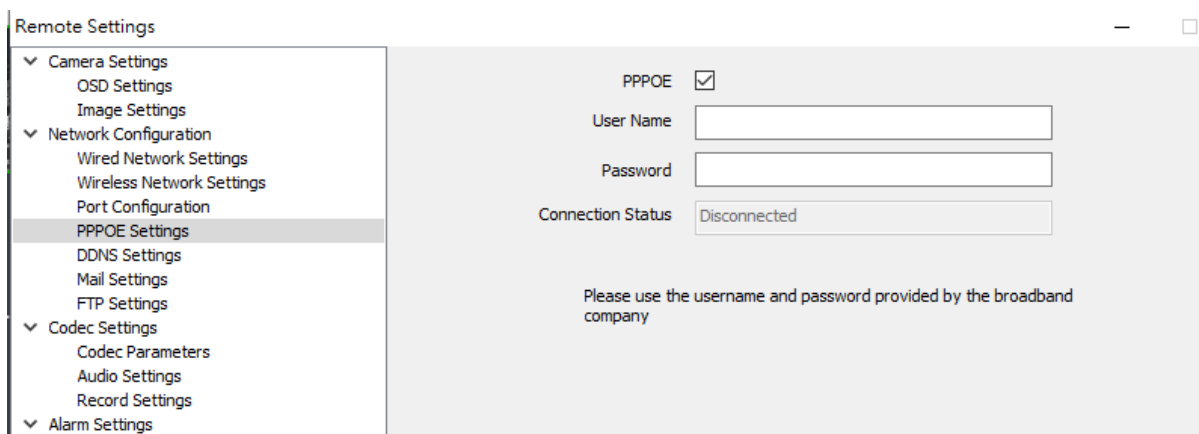
Setting WIFI successful, “apply” , you can remove wired Ethernet cable using in wireless.



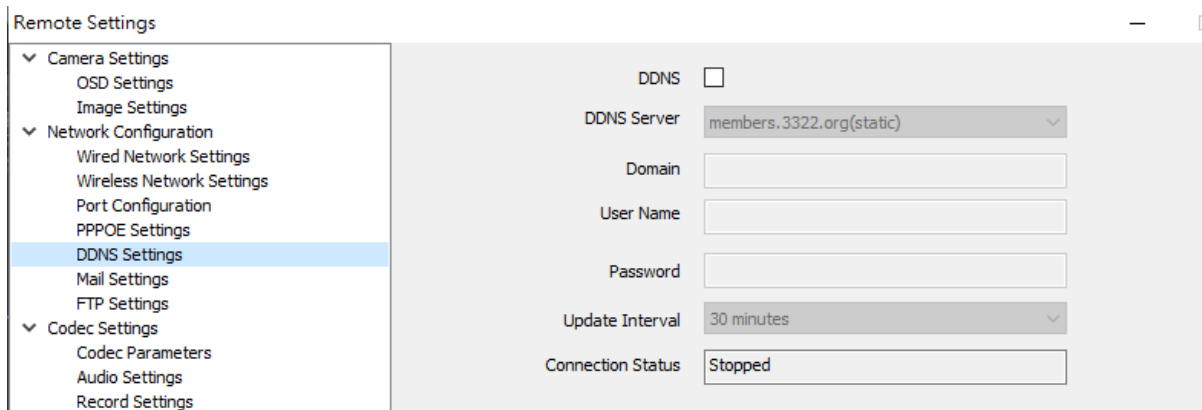
C, Port Setting, HTTP/ After the signaling/data port is modified in the corresponding access software, it is necessary to manually add the modified port number, otherwise it cannot be accessed effectively (nonprofessionals do not recommend modifying it to avoid adding devices)



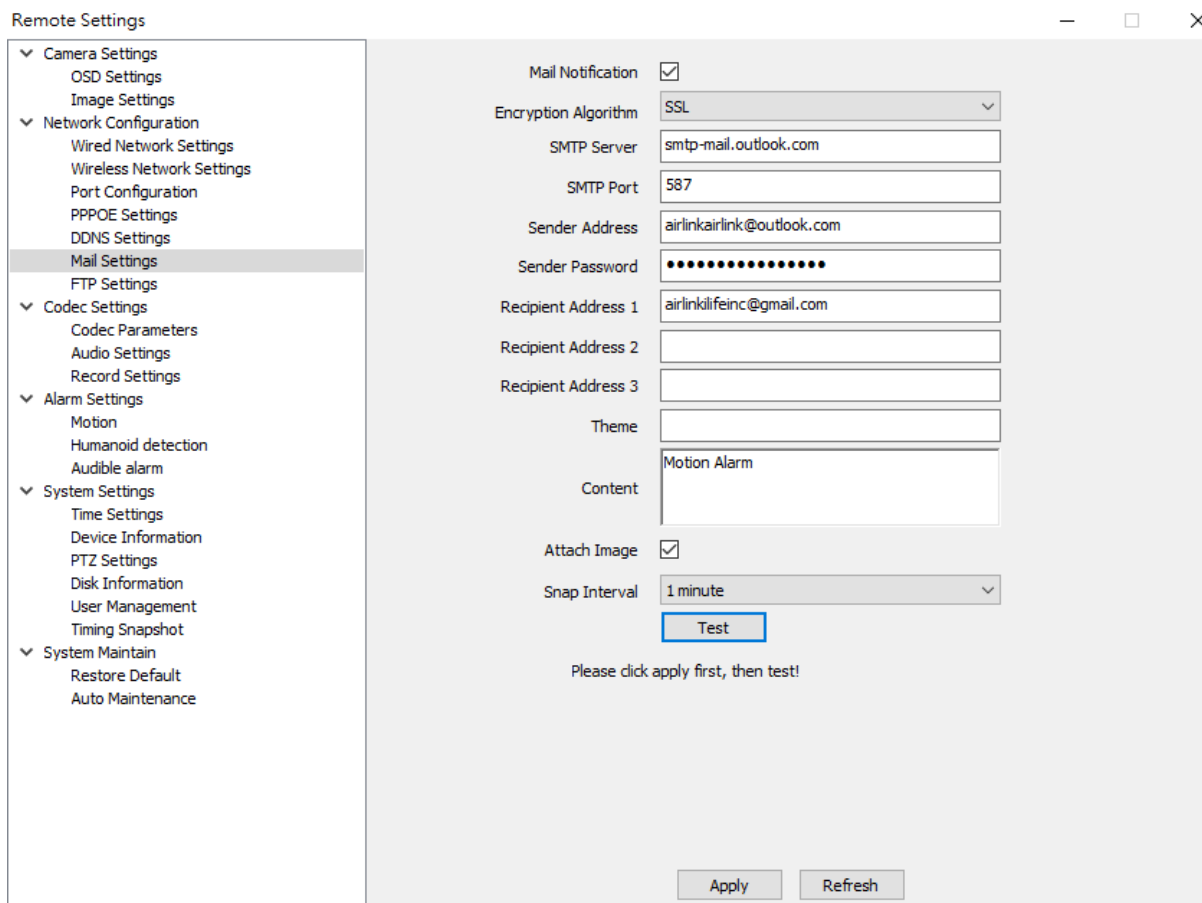
D , PPPOE Settings : Enable and configure, if need in this function for your network configuration.



E › DDNS Settings : Enable and configure, if need in this function for your network configuration.

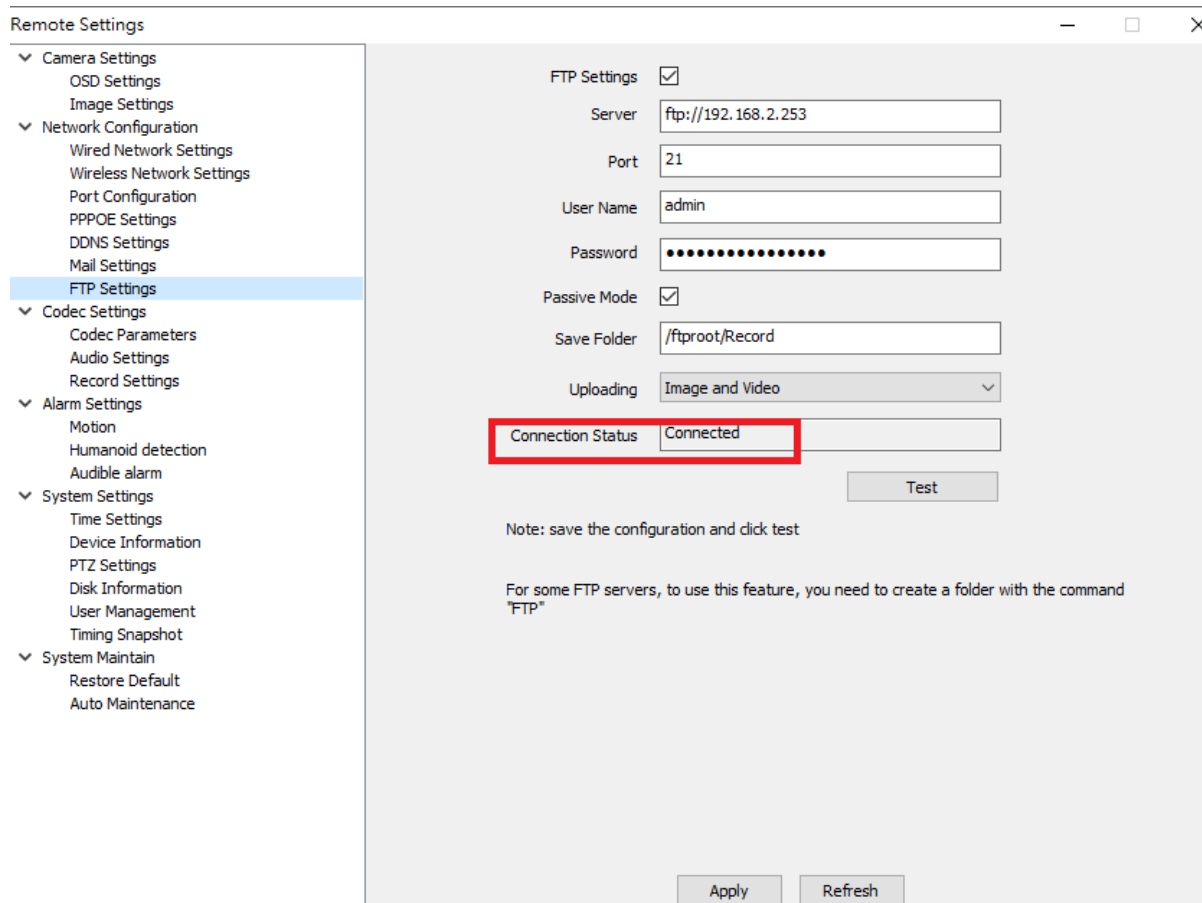


F › Email Settings : Enable and configure. Please click apply first then test.



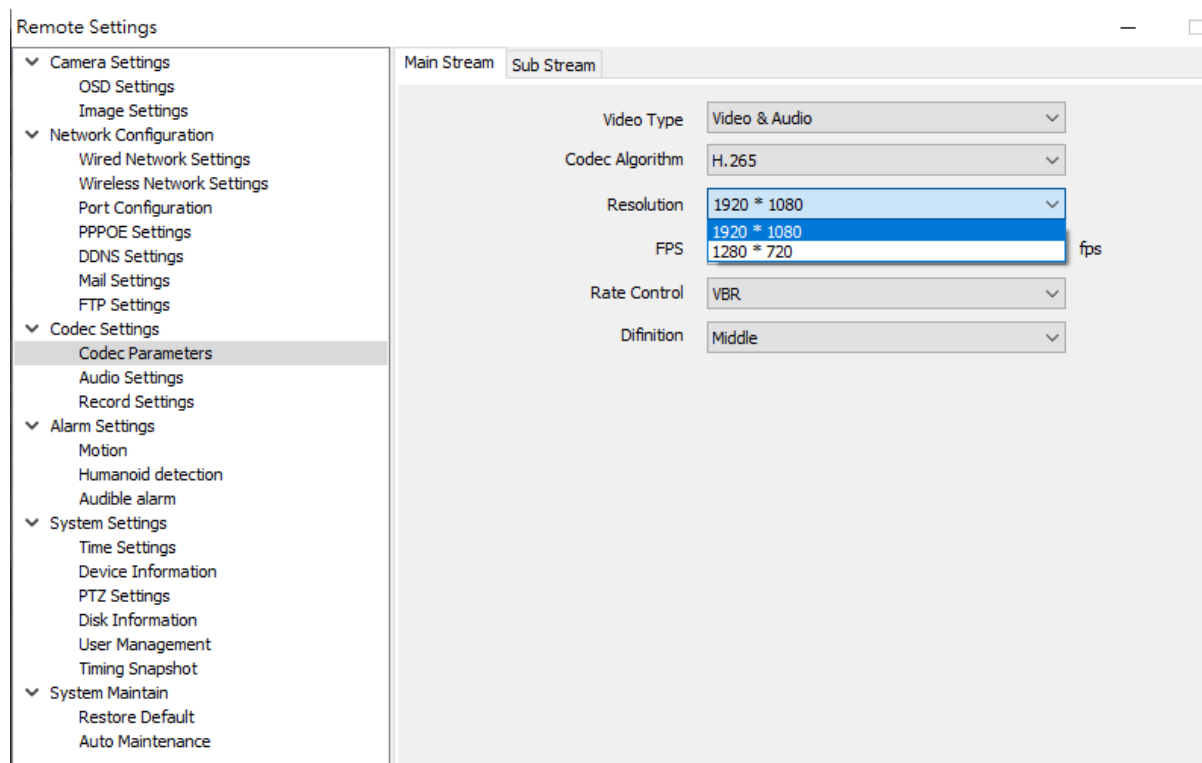
G,FTP Setting :

## AI Human Tracking Camera AirLinkVMS Cameras



### 2.5.3.3, Codec Settings:

A, Codec Parameters: Modify the format of the video screen and the appropriate parameters, has reached the optimal effect

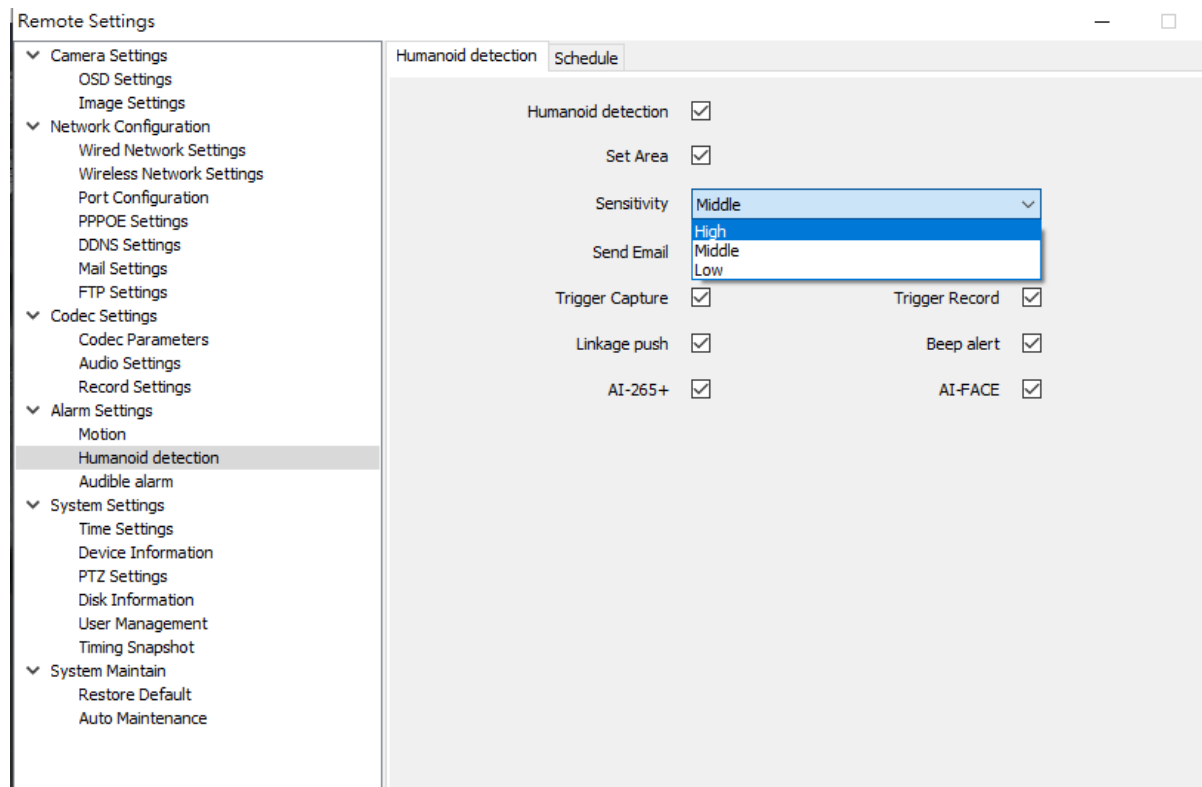




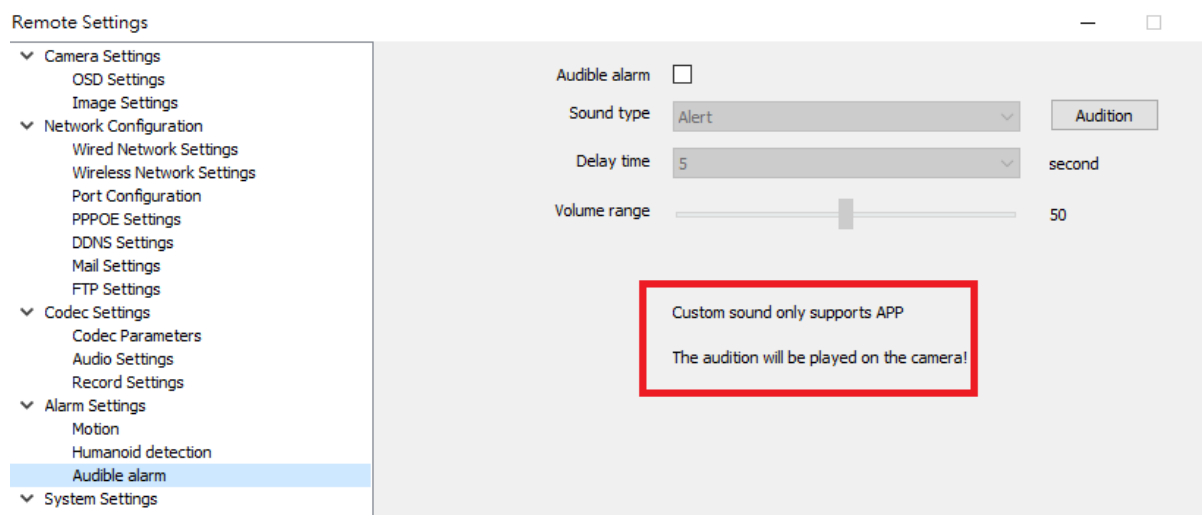




B, Humanoid detection; If your cameras support the AI human detection function, please enabled, the sensitivity can be setup at High, Middle and Low.



C, Audible alarm; If your camera embedded speaker, the audition will be played on the camera, you can adjust the volume range



### 2.5.3.5 System Settings:

A, Time settings: According your local time setup the camera time.

## AI Human Tracking Camera AirLinkVMS Cameras

### Remote Settings

<ul style="list-style-type: none"><li>Camera Settings<ul style="list-style-type: none"><li>OSD Settings</li><li>Image Settings</li></ul></li><li>Network Configuration<ul style="list-style-type: none"><li>Wired Network Settings</li><li>Wireless Network Settings</li><li>Port Configuration</li><li>PPPOE Settings</li><li>DDNS Settings</li><li>Mail Settings</li><li>FTP Settings</li></ul></li><li>Codec Settings<ul style="list-style-type: none"><li>Codec Parameters</li><li>Audio Settings</li><li>Record Settings</li></ul></li><li>Alarm Settings<ul style="list-style-type: none"><li>Motion</li><li>Humanoid detection</li><li>Audible alarm</li></ul></li><li>System Settings<ul style="list-style-type: none"><li>Time Settings</li><li>Device Information</li><li>PTZ Settings</li><li>Disk Information</li></ul></li></ul>	Date/Time	Daylight Saving Time	
	Date Format	YYYY-MM-DD hh:mm:ss	
	Time Format	24-Hour Time	
	Device Date Time	2020-10-09 23:44:47	Sync PC Time
	Synchronize Network Time	<input checked="" type="checkbox"/>	
	Time Zone	(GMT +08:00) Beijing, Singapore, Taipei	
	Sync Interval	1	Hour
	Server Address	pool.ntp.org	

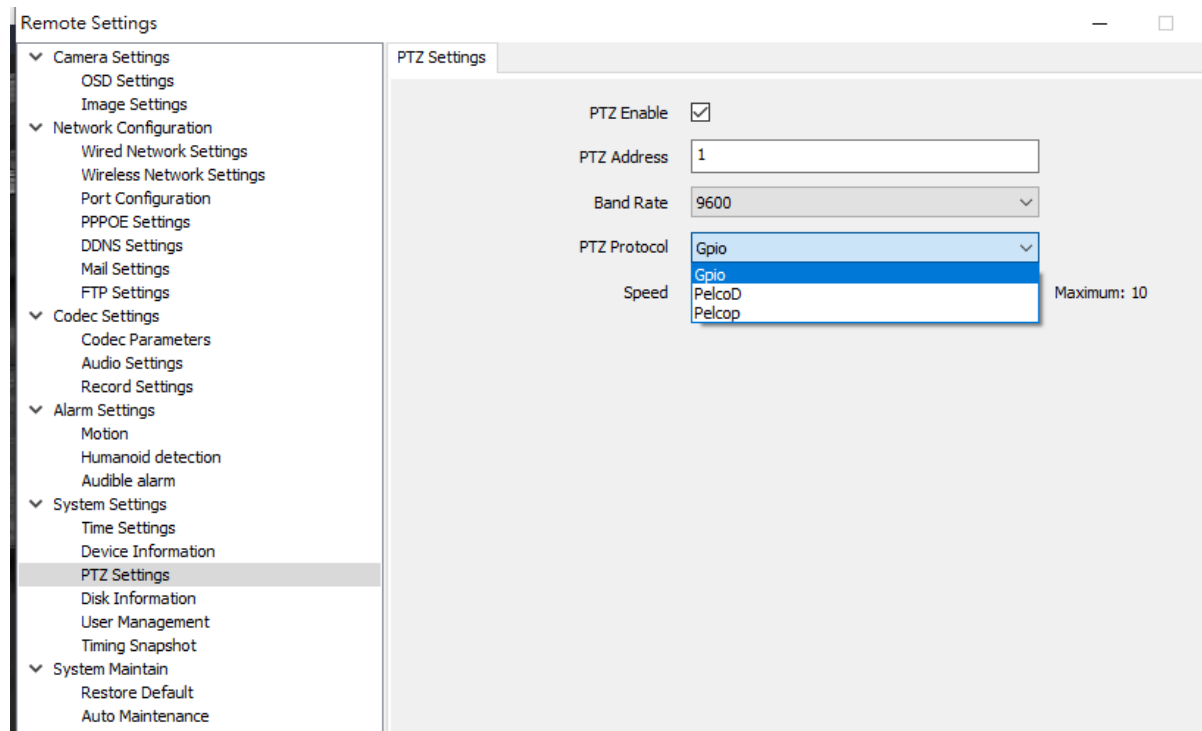
B, Device Information: display the device model no., network connect type, software version and voice call identified.

### Remote Settings

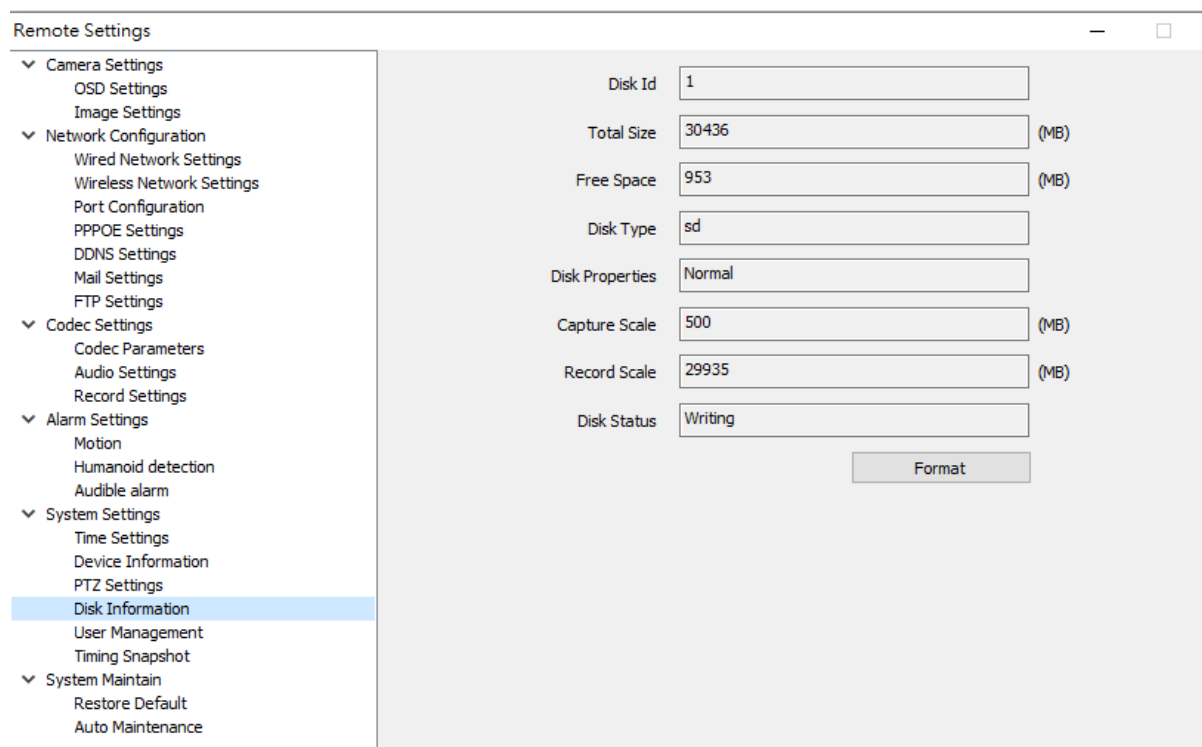
<ul style="list-style-type: none"><li>Camera Settings<ul style="list-style-type: none"><li>OSD Settings</li><li>Image Settings</li></ul></li><li>Network Configuration<ul style="list-style-type: none"><li>Wired Network Settings</li><li>Wireless Network Settings</li><li>Port Configuration</li><li>PPPOE Settings</li><li>DDNS Settings</li><li>Mail Settings</li><li>FTP Settings</li></ul></li><li>Codec Settings<ul style="list-style-type: none"><li>Codec Parameters</li><li>Audio Settings</li><li>Record Settings</li></ul></li><li>Alarm Settings<ul style="list-style-type: none"><li>Motion</li><li>Humanoid detection</li><li>Audible alarm</li></ul></li><li>System Settings<ul style="list-style-type: none"><li>Time Settings</li><li>Device Information</li></ul></li></ul>	Device Name	IPC1	
	Device Model	S834/5520PHR-AI	
	Serial Number	I207F137A5E79E488642BCF	
	Software Version	1.0.2-20190930Z1S	
	Alarm Input	0	
	Alarm Output	0	
	Voice Call	Support	

C, PTZ Settings: PTZ control enable select correct protocol match with your keyboard controller.

AI Human Tracking Camera AirLinkVMS Cameras



D, Disk information: display SD card memory, write status and snapshot, recording for memory size.



E, User Management: Setting user authority

## AI Human Tracking Camera AirLinkVMS Cameras

Remote Settings

- Camera Settings
  - OSD Settings
  - Image Settings
- Network Configuration
  - Wired Network Settings
  - Wireless Network Settings
  - Port Configuration
  - PPPOE Settings
  - DDNS Settings
  - Mail Settings
  - FTP Settings
- Codec Settings
  - Codec Parameters
  - Audio Settings
  - Record Settings
- Alarm Settings
  - Motion
  - Humanoid detection
  - Audible alarm
- System Settings
  - Time Settings
  - Device Information
  - PTZ Settings
  - Disk Information
  - User Management
  - Timing Snapshot
- System Maintain
  - Restore Default
  - Auto Maintenance

In...	User Name	Enable
1	admin	Enable
2	user1	Disbale
3	user2	Disbale
4	user3	Disbale
5	user4	Disbale
6	user5	Disbale

User Name:

Password:

Enable:

user1~user5 cannot modify device parameters!

F, Timing Snapshot: Setting where save the snapshot picture ( only support SD card ,FTP and APP )

Remote Settings

- Camera Settings
  - OSD Settings
  - Image Settings
- Network Configuration
  - Wired Network Settings
  - Wireless Network Settings
  - Port Configuration
  - PPPOE Settings
  - DDNS Settings
  - Mail Settings
  - FTP Settings
- Codec Settings
  - Codec Parameters
  - Audio Settings
  - Record Settings
- Alarm Settings
  - Motion
  - Humanoid detection
  - Audible alarm
- System Settings
  - Time Settings
  - Device Information
  - PTZ Settings
  - Disk Information
  - User Management
  - Timing Snapshot
- System Maintain
  - Restore Default
  - Auto Maintenance

Save to SD

Interval fo Saving SD  10~86400 s

Save to FTP

Interval fo Saving FTP  10~86400 s

### 2.5.3.6, System Maintain

A. Restore default; Reset default (all camera settings restored to the factory state, but will

not delete the user data); Restore factory (camera fully initialized, including settings and user data will be deleted); Reboot (camera restart)

Remote Settings

The screenshot shows the 'Remote Settings' interface. On the left is a sidebar menu with the following categories and items:

- Camera Settings
  - OSD Settings
  - Image Settings
- Network Configuration
  - Wired Network Settings
  - Wireless Network Settings
  - Port Configuration
  - PPPOE Settings
  - DDNS Settings
  - Mail Settings
  - FTP Settings
- Codec Settings
  - Codec Parameters
  - Audio Settings
  - Record Settings
- Alarm Settings
  - Motion
  - Humanoid detection
  - Audible alarm
- System Settings
  - Time Settings
  - Device Information
  - PTZ Settings
  - Disk Information
  - User Management
  - Timing Snapshot
- System Maintain
  - Restore Default
  - Auto Maintenance

The main content area on the right contains three radio buttons:

- Reset Default
- Restore Factory
- Reboot

B. Auto Maintenance; Enable auto maintenance Weekly / Daily/Single with maintenance time and next maintenance time.

This screenshot shows the 'Auto Maintenance' configuration section within the 'Remote Settings' interface. The sidebar menu on the left is identical to the previous screenshot, but 'Auto Maintenance' is now selected and highlighted in grey. The main content area shows the following settings:

- Auto Maintenance
- Maintenance mode: A dropdown menu is open, showing options: Daily, Weekly (highlighted), and Single.
- Maintenance Time: A dropdown menu is open, showing options: Daily and Single.
- Next maintenance time: 2020-10-11 23:59:00

## 2.6, PTZ control

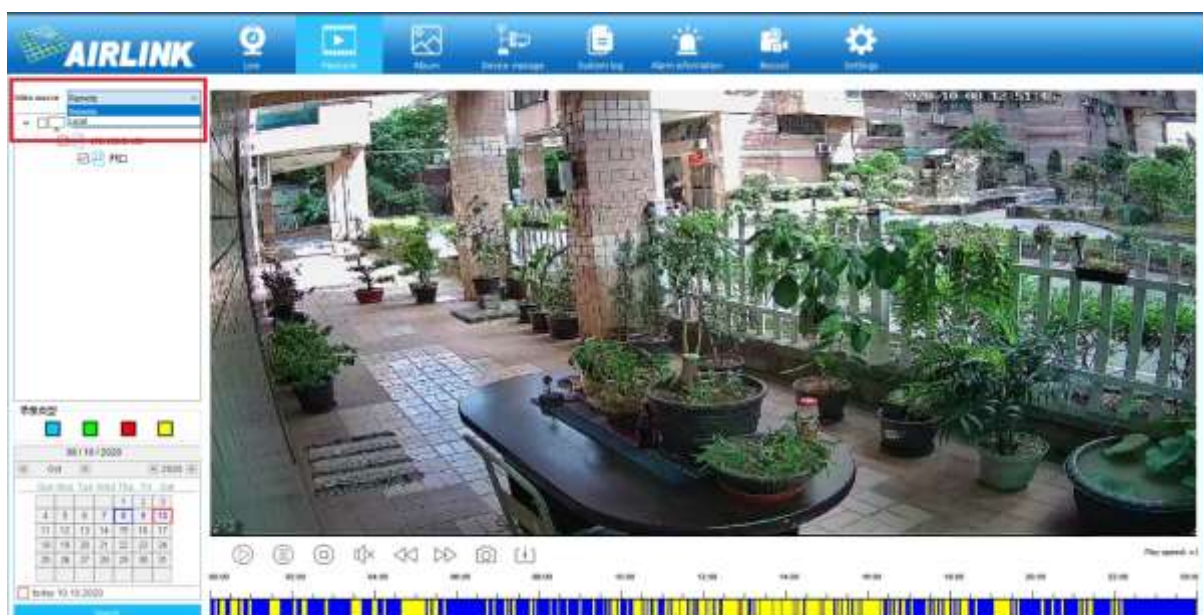
Click on the preview interface > below the device area bar > PTZ to enter the PTZ control interface

step  Adjust rotation speed 1: slowest,10: fastest.

assistance    ON,OFF  
preset    SET,CALL  
cruise     set,run ,stop  
track     record,start,stop

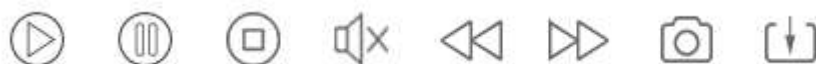
## 2.7. Remote playback (Only support SD card and NVR)

A, Remote playback | Enter the remote playback interface. In the left device tree, select the channel to be played back (Note: currently only supports one playback at a time), select the date on the calendar, click the “Search” button, and the system starts on the NVR/SD card (or local Hard disk) Search for video and display search results.





B. Icons



Player button , press it can continue play the recording.



Pause Button, press it can pause the play the recording.



Stop play Button.



Audio control button turn on/off when it is playing video.



Slow forward.



Fast forward.



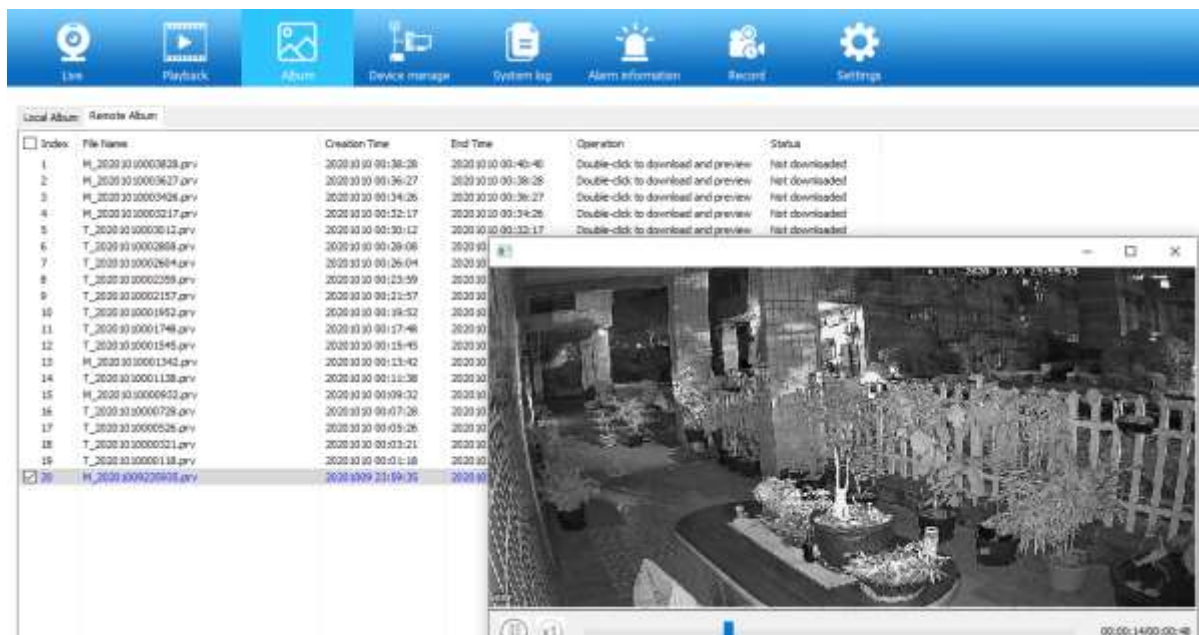
Snapshot for playback video.



Download video file.

2.8. Album

2.8.1 The albums function is managing the picture and video for local and remote, you can view ,download and delete.

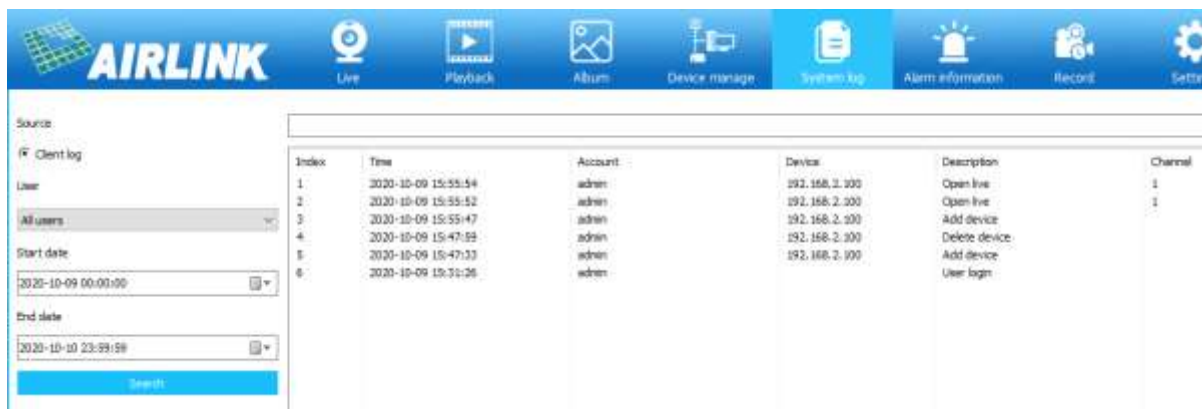


2.8.2 Search by Device , Choose a device , it will search all pictures and videos for the device. Search by date, Choose the date, it will search all pictures and videos for the date.



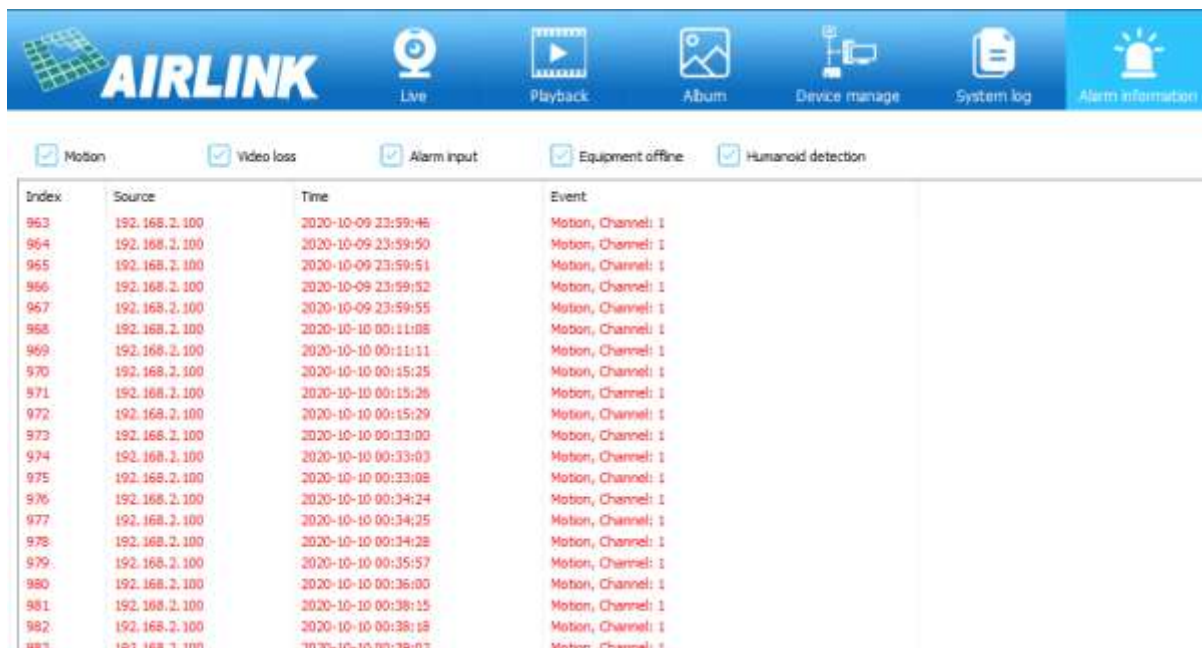
### 2.9. System Log

Login the system Log interface, choose the Client Log, Chose the beginning and end time for search, then you can see time/account/IP address/ description/channel for device.



### 3.0 Alarm Information

The alarm interface were recording all type of the alarm information, it include motion detection, video lost, alarm input, equipment offline ,humanoid detection. User can search and backup the alarm information of all categories. Press **【export】** Button, you can save the video to .csv video file.



End